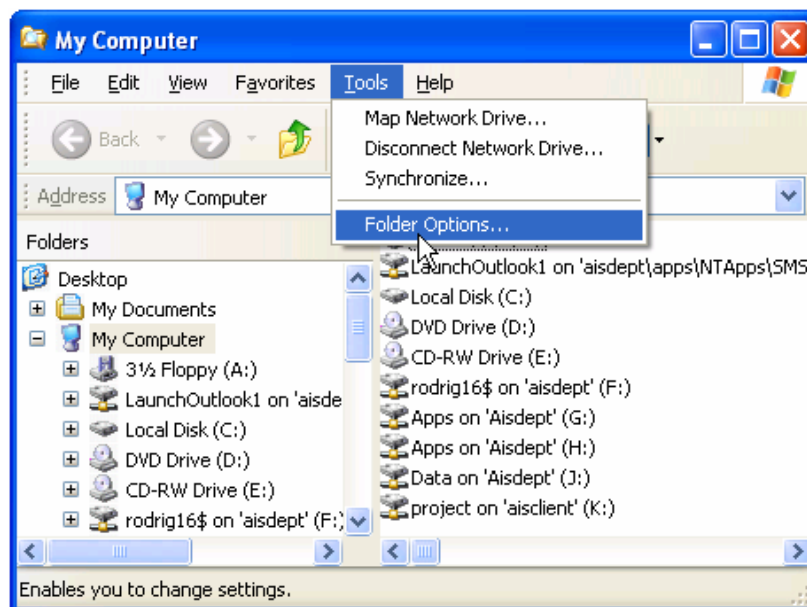


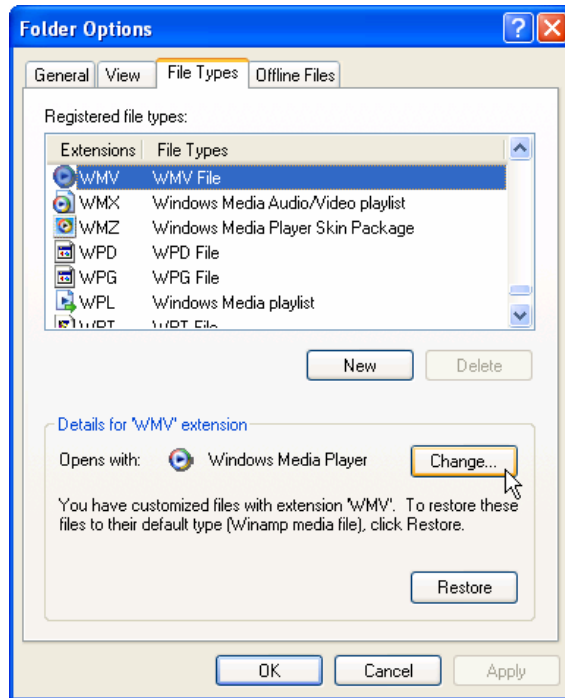
Setting Windows Media Player as the Default for .WMV Files

These tutorials are designed to be viewed using the Windows Media Player. Before attempting to download the modules, please follow these procedures to be sure that Windows Media Player is set as the default option for playing files with the .WMV extension.

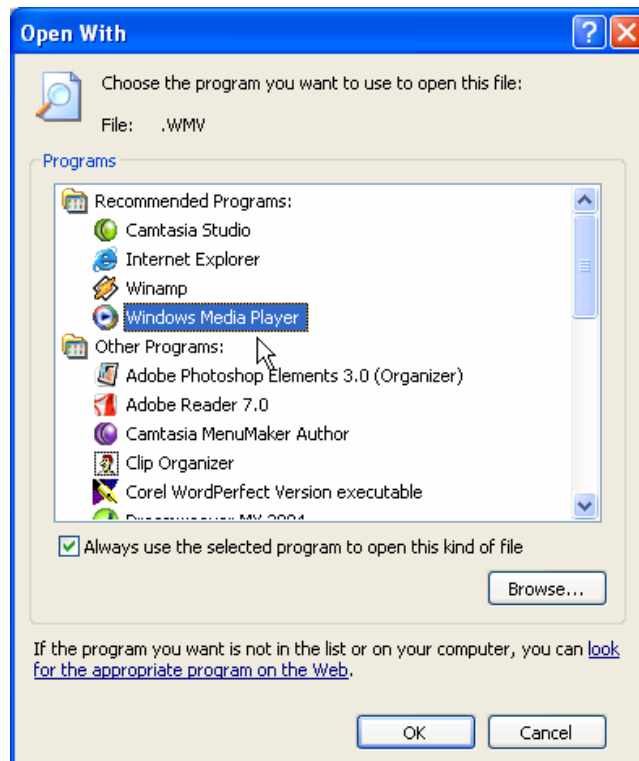
1. Open either **My Computer** or **Windows Explorer**.
2. From the **Tools** menu, choose **Folder Options**.



3. Scroll down the list of file extensions and highlight WMV. Under **Details for '.WMV'** extension, notice which media player is listed there. If it is something other than Windows Media Player, click the **Change** button.



4. Choose **Windows Media Player**, and click **OK**. Be sure the box *Always use the selected program to open this kind of file* is checked.



5. If you are unable to view tutorial files after following these steps, please call the **AIS Help & Support Center** at 353-4420, ext. 311.